

Product Line
SORACK

Type
RM-SR-T12
RM-SR-T12i

Supported Models **SOPHOS XGS 116**
SOPHOS XGS 126
SOPHOS XGS 136

DIMENSIONS 1.3/2U

COLOR RAL 9003 White

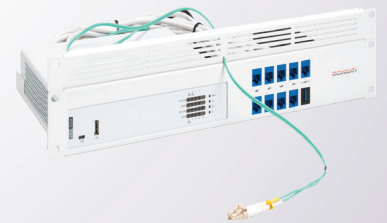
PRODUCT DIMENSIONS 57 x 482 x 217 mm

(height x width x depth) 2.24 x 18.98 x 8.54 in



MOUNTING INSTRUCTIONS

1. Remove 1 bolt from each side of the Sophos appliance.
2. Place your Sophos on the rack, & fix the Sophos with the provided bolts on each side of the appliance.
3. Place the power supply on the rack and tie it down with 2 zip ties.
4. Tie the excess length of the power cable down with 1 zip tie.
5. Connect the cables from your Sophos to the connectors. Tip: start with the bottom row.
6. Optional: use a zip tie to hold the cables together.
7. Optional: connect your own fiber cable and lead the cable to the front of your SORack before placing it in your 19 inch rack (detail 1).
8. Place your SORack in your 19 inch rack.
9. Lead your fiber cable through the opening of the provided front plate.
10. Place the front plate ABOVE the SORack in your 19 inch rack. Together they are 2U high.



Detail 1

Please ensure proper ventilation according to the network appliance manufacturer guidelines.

PACKAGE CONTENTS

Qty	Description
1	SORack + RJ45 couplers + front plate
2	Bolt M3x6mm
5	Zip ties
10	Cables - 0.5 meter



**Consider the environment,
recycle where applicable.**

Rackmount.IT rack mount kits are RoHS compliant, developed & manufactured in the Netherlands and made of first quality parts.

In case of problems please contact your reseller or sales@rackmount.it.

Industrial version is supplied with shielded couplers and cables.

Revision 3 - 21-12-2022

EMEA Office
Nonneveld 27
4811 HN Breda
The Netherlands
T +31 76 200 37 40
E sales@rackmount.it
WWW.RACKMOUNT.IT

US Office
9201 Metric Blvd - Unit A
Austin - TX 78758
United States
T +1 512 521 03 33
E sales-us@rackmount.it

RACKMOUNT.IT